



The pumps are operated with a hand crank or with an electric drive. The drives are compatible with all Ergoswiss hydraulic pumps. Select the suitable drive according to load or lift speed.

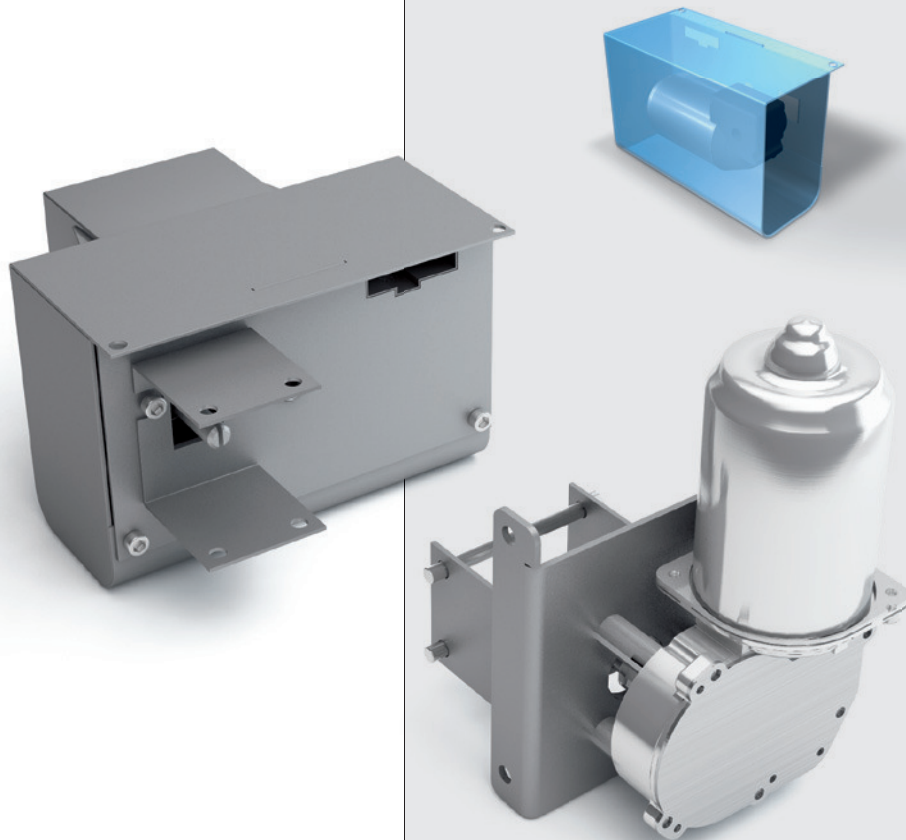
Type A

This drive type is controlled by a simple cable remote control with up/down keys. We recommend Type D for high loads. The engine and the control are built into the housing. The transformer (230 VAC, optionally 110 VAC) is attached on the outside of the housing. The cable remote control (2 m cable length) is installed below the table edge at the desired location, and can be pushed under the table top.

Type D

On drive **Type D** different heights can be memorized and automatically selected. The memory board also has a digital height indicator. The infrared remote control is available as an alternative to the memory board. The power supply (230 VAC, optionally 110 VAC) is integrated into the control unit. The memory board (2.5 m cable length) is installed below the table edge at the desired location, and can be pushed under the table top.

A power and thermal control protects the drive and the entire system against overload. Please consider the options.

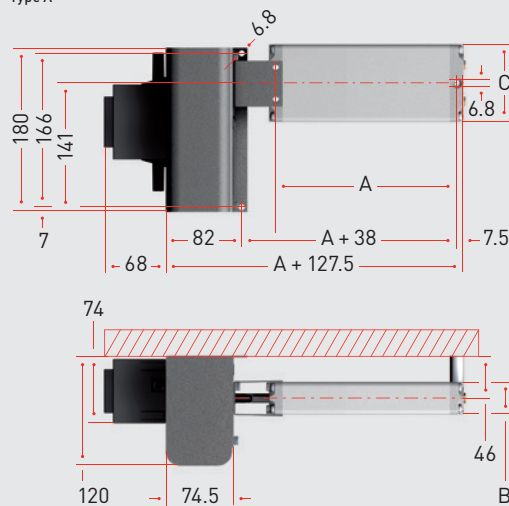


The system comprises all parts as well as installation of the drive to the pump. The drive is installed on the holes provided. The drives are not suitable for continuous operation. After a run-time of one minute the drive needs a rest of approx. 20 minutes (OT 5%). The motor drive lessens the nominal lift by approx. 15 mm.

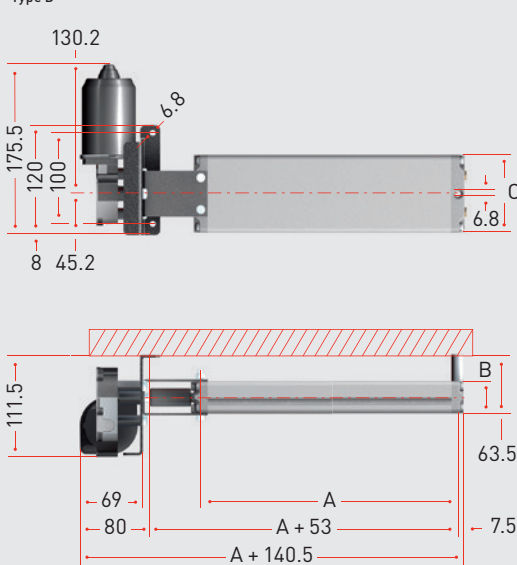
Type A/B/C



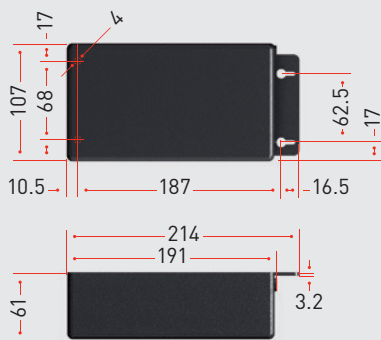
Type A



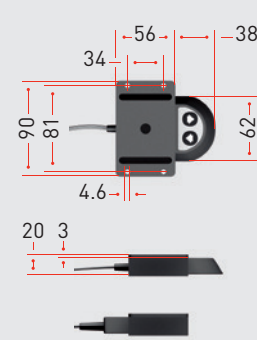
Type D



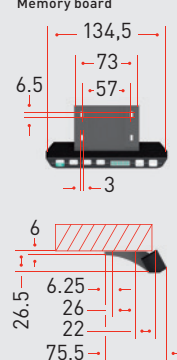
Control unit PXD



Cable remote control A



Cable remote control D/
Memory board



TECHNICAL DATA

Type A

- CE/SEV-tested
- Dimensions 180 x 120 x 127.5
- System voltage 230/110 VAC
- Engine voltage 29 VDC
- Nominal rating approx. 160 VA
- Nominal speed 140 min⁻¹
- Nominal torque 1.7 Nm
- Fastening torque 17 Nm

Type D

- CE/TÜV/UL-certified
- 4 memory positions
- Digital display of height
- System voltage 230/110 VAC
- Engine voltage 24 VDC
- Nominal rating approx. 240 VA
- Nominal speed 160 min⁻¹
- Protection type IP30
- Overload protection
- Thermal protection

Options

- safety protection
- squeeze line
- customer-specific software
- diagnostic function

The mass **A**, **B** and **C** depend on the pump type used. You will find the mass on page 7 under dimensioning of the pumps.